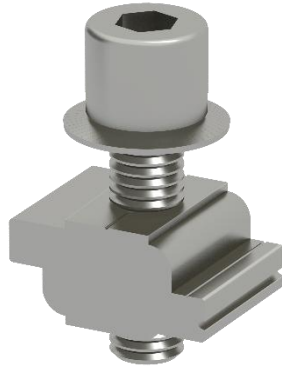


Z Module Assembly with Bolt and Washer

Component



Z Module Assembly with Bolt and Washer
Part No.: EZ-Z-STBW

Technical Specification

Application	For Clenergy' s PV Mounting System
Fixing method	Fix into components that have Z module channel
Dimensions	L23.5mm*H33mm
Weight	0.026 Kg
Packaging	400 units per pack, 2 packs (800 units) per carton
Material	Z Module: AL6005-T5 Fastener: SUS304
Color	Silver
Standard	GB50797 AS NZS1170.2 EN1991 JISC8955 ASCE 7-10

