

RUNNUR



Product Brochure

Ver 2.5 / Last Updated - Oct 2024

RUNNUR

At **RUNNUR** our heritage is founded on a pioneering spirit and a culture of collaboration. We've built our legacy with a future focus that still stays true to the fundamentals of sustainable design. We have built a collaborative culture amongst stakeholders from across our industry, which was critical for us to deliver on our mission. We offer the building, infrastructure, IT, Oil & Gas industries and many more a progressive alternative for their cable management requirements.

RUNNUR is the latest product line from **Clenergy Projects Australia**, whose teams have been designing products since 2007 and has grown into a nationwide Australian company with products sold worldwide. Our ongoing research and development are backed by a culture of open innovation, excellence through quality and being service focused.

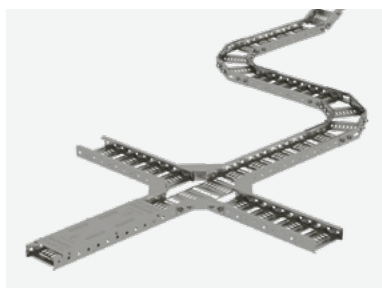
We develop for optimal functionality, with an emphasis on simplicity for aesthetically brilliant projects. Our technically advanced cable trays are complemented by our tray covers and accessories, as well as our unparalleled logistics & operations team, with an emphasis on customer service.



Clenergy Projects Australia is a veteran manufacturer with startup roots in Melbourne, Australia, we have earned a solid reputation throughout the nation and worldwide, because of a proven track record of success.

We bring our expertise to the table to provide your company and engineers with creative insights, and attention to detail.

CLENERGY PROJECTS AUSTRALIA



INDEX

Cable Tray Systems	P4 - P5
CR1 Cable Tray	P6 - P9
MT Cable Tray	P10 - P11
Tunnel Rail Tray	P12
The Brute - Cable Clip for Holding 2 Large Cables	P13
RUNNUR Apparel	P14 - P15

Cable Tray Systems

RUNNUR's CR1 series cable tray system is designed for **functionality, with an emphasis on simplicity for cost-effective projects.**

Designed and tested for Australian nationwide environments, and **the CR1 series** cable tray features a MAC finish - resulting in unmatched strength and reliability. The trays are designed to support up to 113 kgs.

The MT Rail series is perforated channel cable tray for commercial and industrial instrumentation and small power cable management applications.

Available in mill finish aluminium option. Additionally, the internal cable area is free of sharp edges and connection hardware which is complimented with a full range of accessories.



CABLE TRAY SYSTEMS

Corrosion Resistance

RUNNUR by Clenergy is a robust and high corrosion resistance cable management system designed to handle bulk wires, improve aesthetics and safety in establishments.

The RUNNUR Cable Trays, have been developed to manage information and energy cables in establishments where one can easily achieve tees, bends, risers, and crosses by using only small accessories.

MAC Steel

This finish provides highly corrosive resistance to an outdoor environment. Compared to hot dipped galvanized material, MAC finish receives mixing and bonding several times higher with Magnesium Zinc and Aluminium. If your application is for a long-term outdoor exposure, MAC Steel is the desired choice.

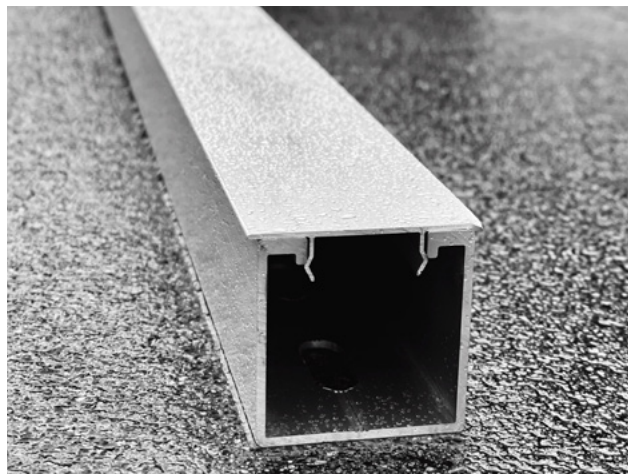
Stainless Steel Grade 304

Stainless Steel Grade 304 has excellent resistance to a wide range of atmospheric environments and many corrosive media. It is a highly durable metal known for its impressive hardness, suitable for making different types of fasteners.

Aluminium

Aluminium has high corrosion resistance. It spontaneously forms a thin but effective oxide layer on all surfaces exposed to the atmosphere preventing further oxidation.

[View all products ►](#)

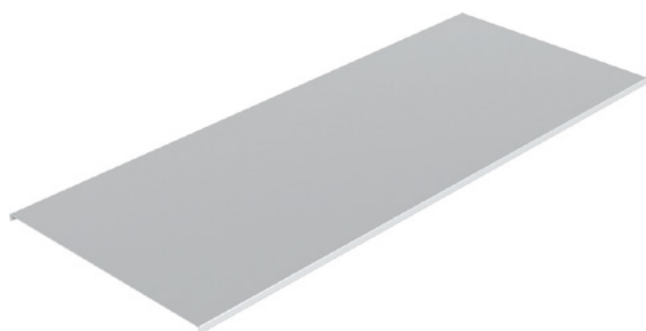
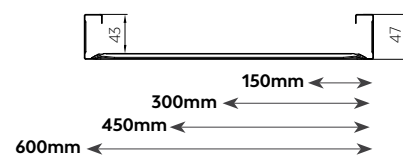
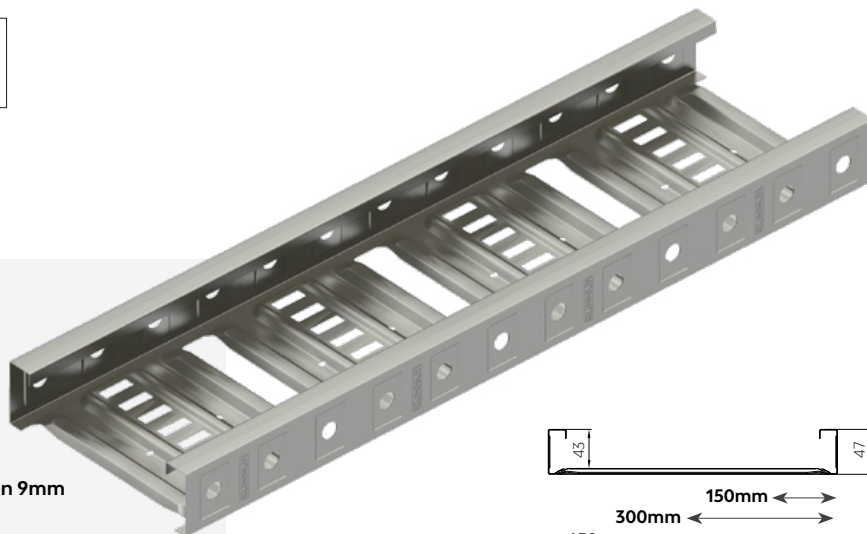


CABLE TRAY SYSTEMS

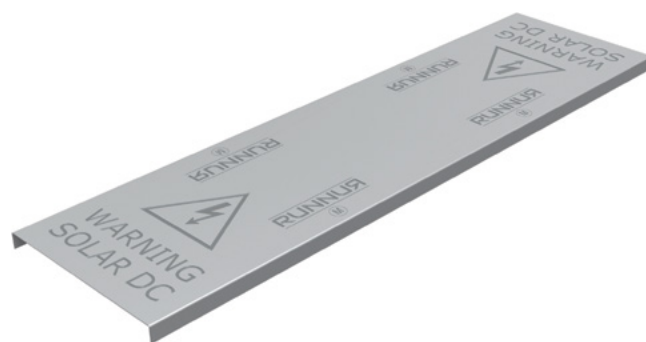
CR1 CABLE TRAY

Load Rating and Deflection

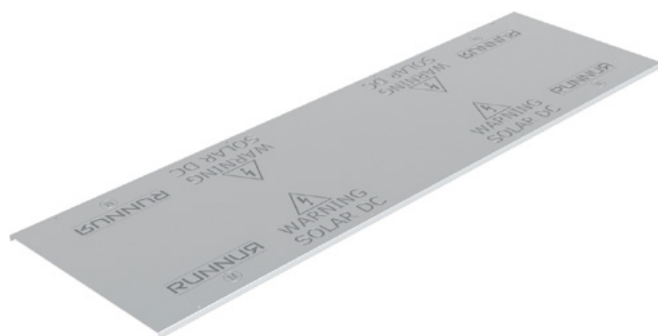
SPAN	3.0m	28kg	Deflection 36mm
	2.5m	40kg	Deflection 25mm
	2.0m	63kg	Deflection 16mm
	1.5m	113kg	Deflection 9mm
LOAD PER METER			



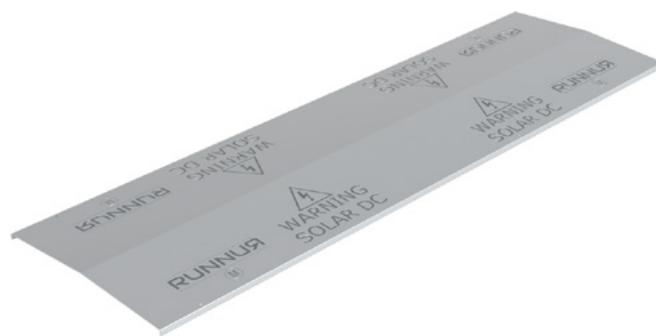
Flat Plain Cover
CR-CTFCxxxM



Flat Cover with "Warning Solar DC"
CR-CTFCS150M



Flat Cover with "Warning Solar DC"
CR-CTFCS300M / CR-CTFCS450M / CR-CTFCS600M



Peak Cover with "Warning Solar DC"
CR-CTPCSxxxM

Cable Tray

Part No. (Ordering Code)	Cable Laying Width (mm)	Cable Laying Depth (mm)	Overall Width (mm)	Side Rail Height (mm)	Weight (kg)	Packaging
CR1-CT150M	150	43	172	50	1.887/m	150 pcs per pallet
CR1-CT300M	300	43	322	50	2.707/m	84 pcs per pallet
CR1-CT450M	450	43	474	50	3.563/m	56 pcs per pallet
CR1-CT600M	600	43	626	50	4.402/m	28 pcs per pallet

Notes:

1) CR1 has been tested in accordance with NEMA VE1 standard by a NATA certified testing facility. The deflection for continuous span is based on physical test results for easy reference. However, it cannot be applied to end spans. Please refer to NEMA VE2 installation guidelines for cable tray installations.

2) Supplied in 3m length.

3) Standards --- AS/NZS 4600, AS/NZS 1170.0, AS/NZS 1170.1, NZS 1170.5, NZS 4219

Flat and Peaked Cover

Part No. (Ordering Code)	Nominal Width (mm)	Overall Width (mm)	Length (mm)	Weight (kg)	Packaging
CR-CTFC150M CR-CTFCS150M CR-CTPCS150M	150	175	3000	0.954/m	150 pcs per pallet
CR-CTFC300M CR-CTFCS300M CR-CTPCS300M	300	325	3000	1.661/m	84 pcs per pallet
CR-CTFC450M CR-CTFCS450M CR-CTPCS450M	450	477	3000	3.146/m	56 pcs per pallet
CR-CTFC600M CR-CTFCS600M CR-CTPCS600M	600	629	3000	4.102/m	28 pcs per pallet

Note:

1) Supplied in 3m length;

2) Standards --- AS/NZS 4600 (Labelling / Signs to AS/NZS5033).

CR1 CABLE TRAY

Accessories

Clenergy RUNNUR Cable Tray accessories is available to complement the Cable Tray and make it easy to achieve tees, bends, risers, and crosses.



CR1-SPM
Splice Plate (*1)

2 Splices required per length of tray.
Order fasteners separately for installation:
2 x CR-SBS
2 x CR-CS



CR1-RM
Riser Link (*1)

6 Riser Links required to perform a 90° set.
Order fasteners separately for installation (per Riser Link):
2 x CR-SBS
2 x CR-CS



CR1-HM
Hold Down Unit (*1)

Order fasteners separately for installation



CR1-TM
Tee/Cross Bracket (*1)

2 TX Brackets required to make a tee; 4 required to make a cross. Order fasteners separately for installation (per Tee/Cross Bracket):
4 x CR-SBS
4 x CR-CS



CR-I-01
Tin Interface for Cable Tray (*2)

Bolts & washers included



CR1-RPM
Radius Plate (*1)

Standard 2.0m length.
Order fasteners separately for installation. Approximate length required to make a 150mm radius bend:

Tray Width	Length Required	Fasteners Required
150mm	0.7m	6
300mm	0.9m	6
450mm	1.2m	8
600mm	1.4m	8



CR-SBS
Splice Bolt M10*18 (*3)



CR-CS
Counterbore Nut (*3)



CR1-DSM
Cable Tray Divider Strip (*1)

Standard 3.0m length



CR-DM/BWS
Diamond Module Assembly with Bolt M8*20 and Large Washer (*3)



CR-CSA
25 & 32 mm Conduit Half Saddle (*2)

Note:

Standards --- (*1) AS/NZS 4600, (*2) AS/NZS1866, (*3) AS2837

Order Method

Example

Cable Tray & Cover

CR1-CT 150 M

Select Cable Tray	Select Component	Select Width (mm)	Select Finish
CR Clenergy RUNNUR Series	CT Cable Tray	150	M MAC
CR1 Clenergy RUNNUR Series 1	CTFC Cable Tray Flat Cover	300	
	CTFCS Cable Tray Flat Cover with "Warning Solar DC"	450	
	CTPCS Cable Tray Peaked Cover with "Warning Solar DC"	600	

Accessories

CR1-SP M

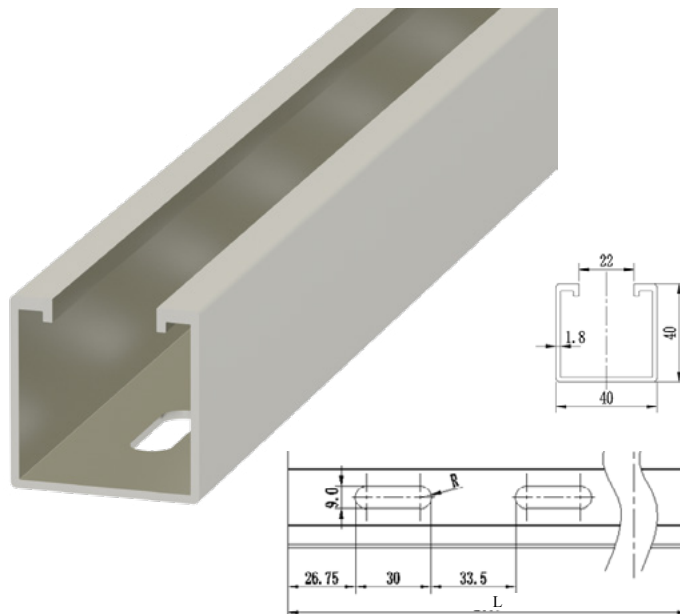
Select Cable Tray	Select Accessory	Select Finish
CR Clenergy RUNNUR Series	SP Splice Plate	M MAC
CR1 Clenergy RUNNUR Series 1	R Riser Link	S Stainless Steel
	T Tee/Cross Bracket	A Aluminium
	RP Radius Plate	
	H Hold Down Unit	
	SB Splice Bolt	
	C Counterbore Nut	
	CS Conduit Saddle	
	DS Divider Strip	

CABLE TRAY SYSTEMS

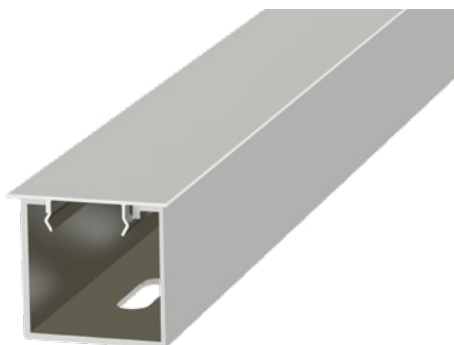
MT CABLE TRAY

Load Rating and Deflection

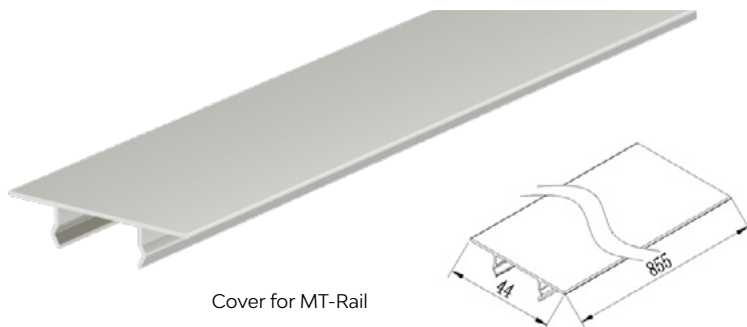
SPAN	2.5m	38kg
	2.0m	59kg
	1.5m	106kg
	1.0m	239kg



Assembly



Components



Cover for MT-Rail

Cable Tray

Part No. (Ordering Code)	EZ-CT-40/40/2560, CR-CT-40/40/3000		
Application	Fix Solar DC Cables	Packaging	1020 pcs per pallet
Fixing Method	Fix on the ECO or T rail with Z module	Material	AL/6005-T5
Dimensions	L2560 or 3000mm*W40mm*H40mm	Finish	Mill Finish
Weight	0.676 kg/m	Standard	AS/NZS1866

Cover

Part No. (Ordering Code)	CO-MT/855		
Application	Cover for MT-Rail Cable Tray	Packaging	30 units per carton
Fixing Method	Click in MT-Rail Cable Tray	Material	AL/6005-T5
Dimensions	L855mm*W44mm*H9.52mm	Finish	Mill Finish
Weight	0.135kg	Standard	AS/NZS1866

Accessories



CR-I-01
Tin Interface for
Cable Tray



EZ-SP-MT/CT
Splice Plate for
MT-Rail Cable Tray



CR-DM/BWS
Diamond Module Assembly
with Bolt M8*20
and Large Washer

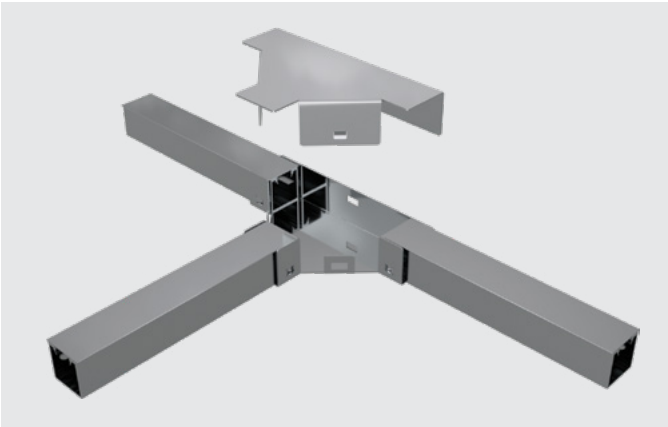
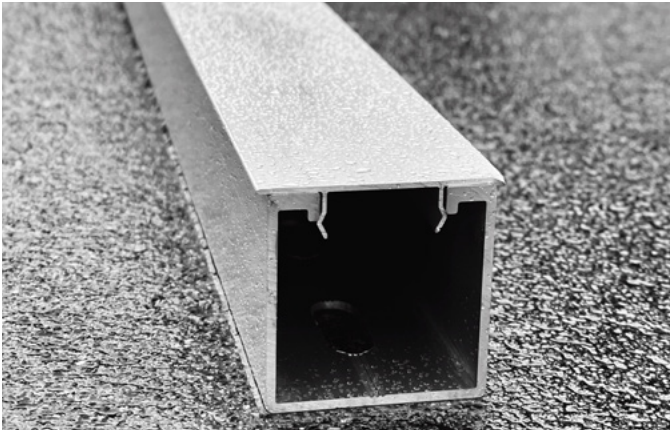


CR-T-40/40
Tee Junction 40*40 mm



CR-B-40/40
90 Degree Bend 40*40 mm

Note:
Standards --- AS/NZS 1866, AS 2837



TUNNAL RAIL TRAY

Assembly

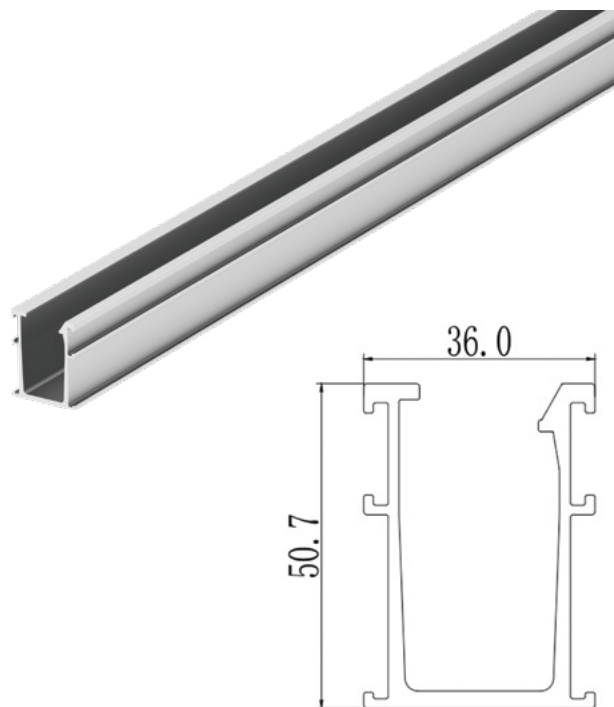
Install with L feet



Install with
Klip-lok Clamp (ER-I-34/CRC)



Component



Technical Specification

Part No.(Ordering Code)	CR-RT-TUN/4400/MF, CR-RT-TUN/4600/MF
Dimension	W36.0mm* H50.7mm*4400 or 4600mm
Packaging	96 pcs per pack; 4 packs (384 pcs) per pallet
Weight	0.947 Kg/m
Material	AL6005-T5
Color	Silver
Finish	Mill Finished
Standard	AS NZS1170.2

Accessories



SCO-ECO/380
TUNNAL Rail Tray Cover,
380 mm



ER-SP-ECO
Splice Plate



ER-I-05A/EZC/ECO
Tin Interface A with
ezClick connection



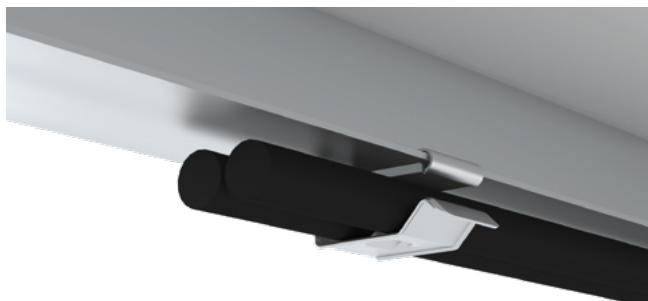
ER-I-05A/EZC/MAX
Tin Interface A with
ezClick connection and
double chambers



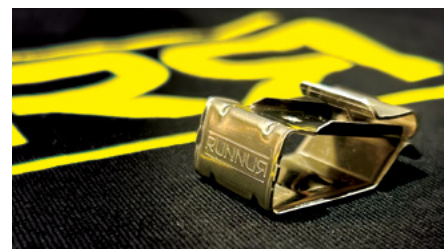
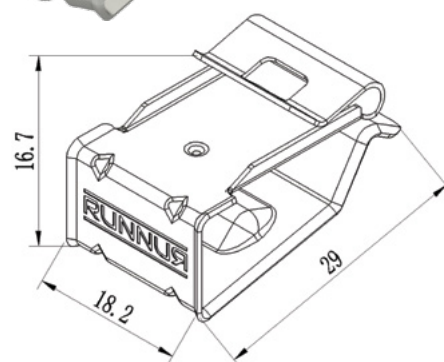
ER-I-34/CRC
Brooklyn Klip-lok Interface
pre-assembly with
Cross Connector Clamp

THE BRUTE - CABLE CLIP FOR HOLDING 2 LARGE CABLES

Assembly



Component



Technical Specification

Part No.(Ordering Code)	CR-BRU/2
Fixing Method	Fixed on the frame of PV module, holding two cables
PV Module Type	For framed PV Module only
PV Module Frame Thickness	1.0-2.0 mm
Min Inserted Depth	6 mm
Max Cable Size	10 mm OD
Dimensions	L29mm*W18.2mm*H16.7mm
Weight	6 g
Packaging	35 pcs per bag; 20 bags (700 pcs) per carton; 88 cartons (61,600 pcs) per pallet
Material	SUS304 (3/4H)
Color	Silver

RUNNUR



Merch Store



APPAREL

 @runnurcabletrays   @runnur.clenergy  @runnur

T: 03 9239 8088 | E: sales@clenergy.com.au | W: www.runnur.com.au





A Cleenergy Technologies Company