

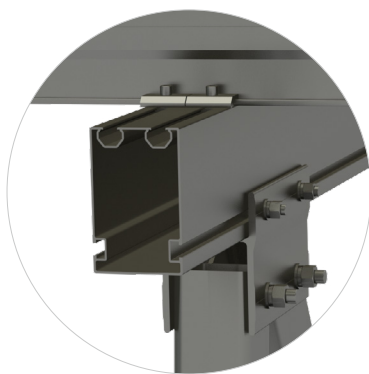
# EzShade 2.0

## Solar Parking Solution for Residential and Commercial Projects



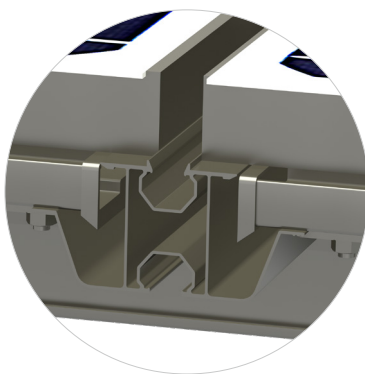
PVezRack® ezShade 2.0 is a solar parking solution providing solar panels support as well as car sheltering for residential and commercial projects. The high quality aluminum components and stainless steel fasteners ensure a robust and reliable system. With the exquisite structure design, the waterproof function is available without using a large amount of EPDM rubbers. Both silver anodized and black anodized options are available.

## Main Benefits



### Easy Installation

Thanks to the innovative structural design, the system can be installed with less steps in a short time.



### Waterproof

With the new structural design, the PVezRack® ezShade 2.0 is totally waterproof after real testing in rainy day.



### Excellent Corrosion Resistance

Manufactured from high quality anodized aluminum and stainless steel with excellent corrosion resistance, PVezRack® ezShade 2.0 offers reliable and durable solution.



## Technical Details

Module Orientation	Landscape or Portrait
Module Type	Framed
Foundation	Concrete
Wind Load	up to Wind Region D (AS/NZS 1170/2)
Tilt Angle	5° (standard)*
Material	Main Structure: AL6005-T5 Fasteners: SUS 304
Span	up to 5.5 m*
Depth	up to 6 m*
Standard	AS NZS 1170.2   EUROCODE 0-9   JISC 8955   ASCE 7-10
Mini Ground Clearance	2100mm*
Application	Carport, Backyard Shade, Swimming Pool Shade – Applications are endless
Available Colours	Silver or Clenergy Hollywood - Black
Warranty	25 years






\*for other values, please consult with Clenergy



### Clenergy

1/10 Duerdin St  
Clayton VIC 3168  
Australia

**Phone:** +61 3 9239 8088  
**Email:** sales@clenergy.com.au  
**Web:** www.clenergy.com.au

 @ClenergyGlobal / @ClenergyClub / ClenergyAUS
  @Clenergy
  @ClenergyClub  
 @Clenergy\_global
  @Clenergy

A Clenergy Technologies Company

