

## ENERGY & INFORMATION CONNECTED

CABLE TRAY SYSTEMS

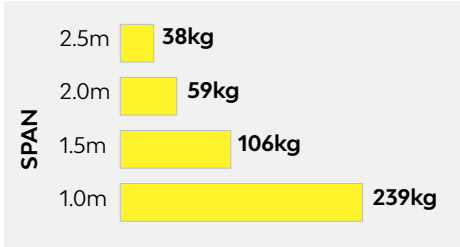
INSTALLATION GUIDE



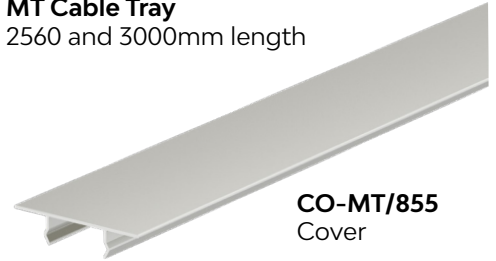
MT CABLE TRAY

## Cable Tray & Cover

### Load Rating and Deflection



**MT Cable Tray**  
2560 and 3000mm length



**CO-MT/855**  
Cover

## Cable Tray Accessories



**CR-I-01**  
Tin Interface for Cable Tray



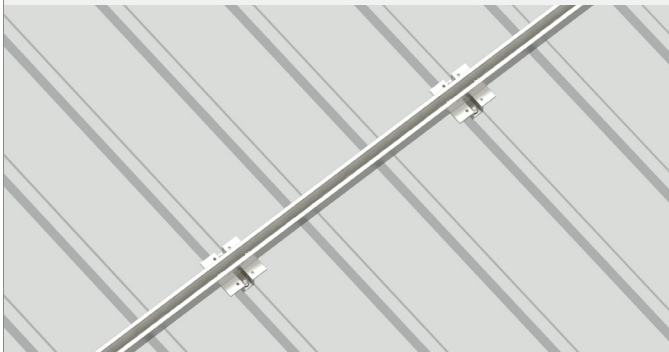
**EZ-SP-MT/CT**  
Splice Plate for MT-Rail Cable Tray



**CR-DM/BWS**  
Diamond Module Assembly  
with Bolt M8\*20 and Large  
Washer

## Installation Method

### Interface



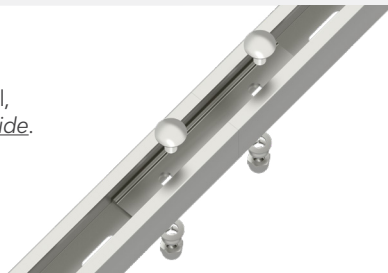
### MT Cable Tray



### Splice Plate for MT-Rail

#### Option 1

Install on bottom of MT-Rail,  
Cap nuts fasten on the *outside*.



#### Option 2

Install on bottom of MT-Rail,  
Cap nuts fasten on the *inside*.

