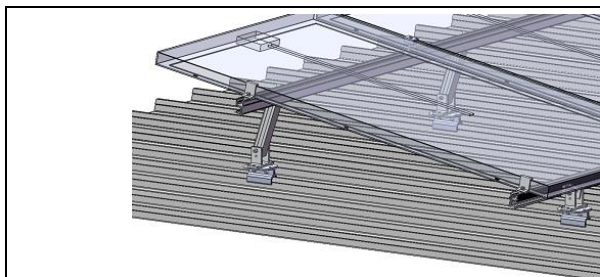


Adjustable Tilt Legs with Buildex C5 Screws

Assembly



Install with Klip-lok Interface



Install on tin roof directly

Component

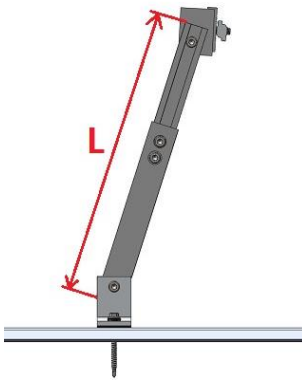


Adjustable Tilt Legs with Buildex C5 Screws

Part No.: ER-TL-10/15/PS/C5 (bar code: 13-12017-082)

Part No.: ER-TL-15/30/PS/C5 (bar code: 13-12017-083)

Technical Specification

Application	Tin Roof (up to ISO 9223 Category 5)	 <p style="font-size: small;">Adjustable range for Rear Leg: ER-TL-10/15/PS/C5: 260-375 mm ER-TL-15/30/PS/C5: 390-635 mm</p>
Purlin Requirement	Metal or Timber Purlin	
Screw Specification	4 x C5 Buildex 14-11 x 70 (14 gauge, 6.3 mm, 11 TPI, 70 mm long) screw with 16 mm Aluminum Bonded Washer	
Packaging	ER-TL-10/15/PS/C5: 14 units per carton ER-TL-15/30/PS/C5: 14 units per carton	
Weight	ER-TL-10/15/PS/C5: 1.061 kg ER-TL-15/30/PS/C5: 1.282 kg ER-TL-10/15/PS/C5: 15 kg (carton) ER-TL-15/30/PS/C5: 18 kg (carton)	
Packaging Dimension	ER-TL-10/15/PS/C5: L395*W260*H330mm ER-TL-15/30/PS/C5: L550*W265*H280mm	
Material	Main Structure: AL6005-T5 Bolts/washers/nuts: SUS 304 Rubber Pad: EPDM Screw: Carbon Steel SAE 1022 with Climaseal 5 finish	
Color	Silver (anodized, no less than 10 µm, excluding machined surfaces)	
Standard	ISO 9223, AS/NS 1170.2	