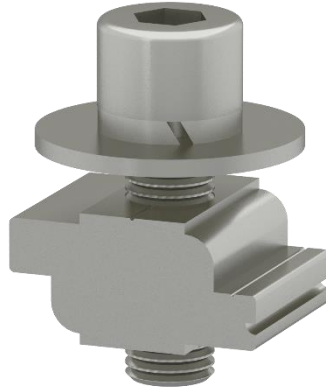


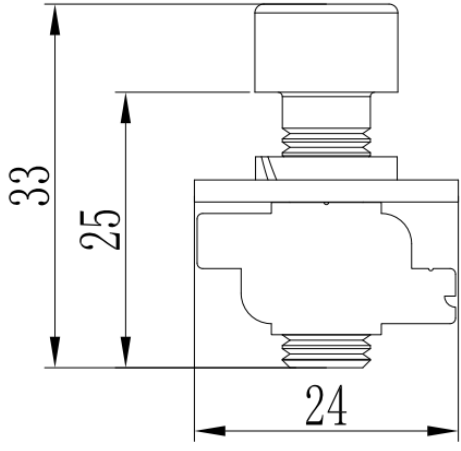
Z-module Assembly with Bolt and Large Washer

Component



Z-module Assembly with Bolt and Large Washer
Part No.: EZ-Z-STBW (bar code: 13-14021-015)

Technical Specification

Application	Fix microinverter or optimizer on Clenergy ECO or T rail	
Screw Specification	Hexagon socket head cap screw M8*25	
Dimensions	W24mm*H33mm	
Packaging	400 units per pack, 2 packs (800 units) per carton	
Packaging Dimension	L405*W270*H180mm (carton dimension)	
Weight	0.028 Kg 22.86 Kg (carton)	
Material	Z-module: AL6005-T5; Bolts/Washer: SUS304	
Color	Silver (half-anodized no less than 10 μm)	
Standard	AS NZS1170.2-2011	