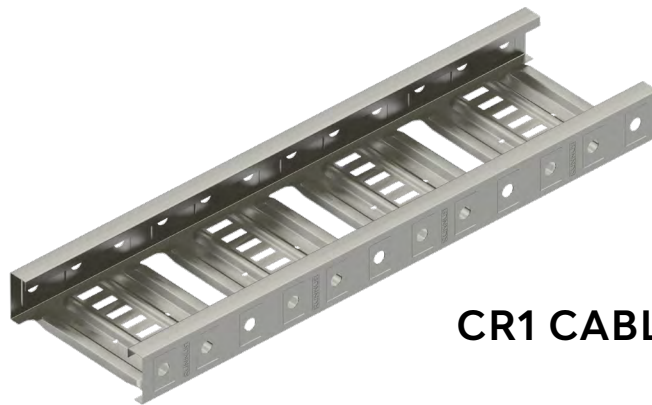


# ENERGY & INFORMATION CONNECTED

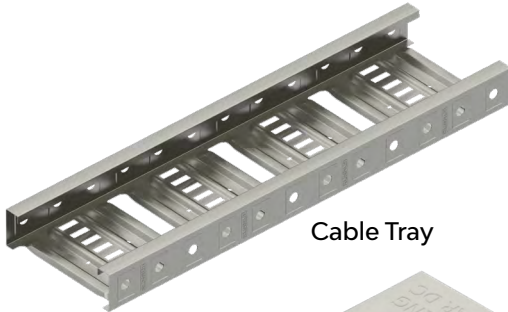
CABLE TRAY SYSTEMS

INSTALLATION GUIDE

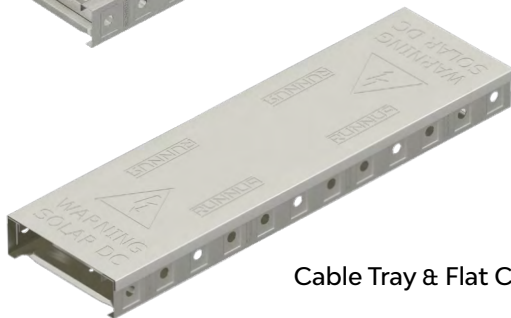


**CR1 CABLE TRAY**

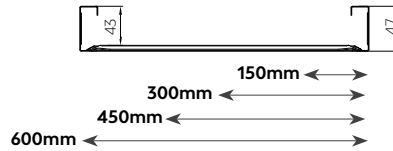
### Cable Tray



Cable Tray



Cable Tray & Flat Cover



#### Load Rating and Deflection

|                |      |       |                 |
|----------------|------|-------|-----------------|
| SPAN           | 3.0m | 28kg  | Deflection 36mm |
|                | 2.5m | 40kg  | Deflection 25mm |
|                | 2.0m | 63kg  | Deflection 16mm |
|                | 1.5m | 113kg | Deflection 9mm  |
| LOAD PER METER |      |       |                 |

#### Notes:

- 1) CR1 has been tested in accordance with NEMA VE1 standard by a NATA certified testing facility. The deflection for continuous span is based on physical test results for easy reference. However, it cannot be applied to end spans. Please refer to NEMA VE2 installation guidelines for cable tray installations.
- 2) Supplied in 3m length.

### Cable Tray Accessories



#### CR1-SPM Splice Plate (\*1)

2 Splices required per length of tray. Order fasteners separately for installation:  
2 x CR-SBS  
2 x CR-CS



#### CR1-RM Riser Link (\*1)

6 Riser Links required to perform a 90° set. Order fasteners separately for installation (per Riser Link):  
2 x CR-SBS  
2 x CR-CS



#### CR1-TM Tee/Cross Bracket (\*1)

2 TX Brackets required to make a tee; 4 required to make a cross. Order fasteners separately for installation (per Tee/Cross Bracket):  
4 x CR-SBS  
4 x CR-CS



#### CR1-HM Hold Down Unit (\*1)

Order fasteners separately for installation



#### CR-I-01 Tin Interface for Cable Tray (\*2)

Bolts & washers included



#### CR-SBS Splice Bolt M10\*18 (\*3)



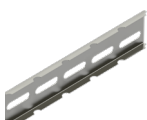
#### CR-CS Counterbore Nut (\*3)



#### CR-DM/BWS Diamond Module Assembly with Bolt M8\*20 and Large Washer (\*3)



#### CR-CSA 25 & 32 mm Conduit Half Saddle (\*2)



#### CR1-RPM Radius Plate (\*1)

Standard 2.0m length. Order fasteners separately for installation. Approximate length required to make a 150mm radius bend:

| Tray Width | Length Required | Fasteners Required |
|------------|-----------------|--------------------|
| 150mm      | 0.7m            | 6                  |
| 300mm      | 0.9m            | 6                  |
| 450mm      | 1.2m            | 8                  |
| 600mm      | 1.4m            | 8                  |



#### CR1-DSM Cable Tray Divider Strip (\*1)

Standard 3.0m length

### Storage

- 1) MAC steel cable trays can be stored outdoors, but should be loosely stacked, elevated off the ground, and kept in a well-ventilated dry location. For aesthetic considerations, cable tray should be stored indoors or under cover to prevent staining from water or other foreign materials.
- 2) MAC steel cover shall be stored indoors or under cover to prevent water or other foreign materials staining.

### Handling

- 1) MAC steel cable tray and cover got non rounded and sometimes sharp edges. Proper awareness of potential cut risks is necessary, and it is recommended to use protective equipment when handling them.



- 2) Cable tray covers should be held vertically during handling to prevent potential buckling issues.

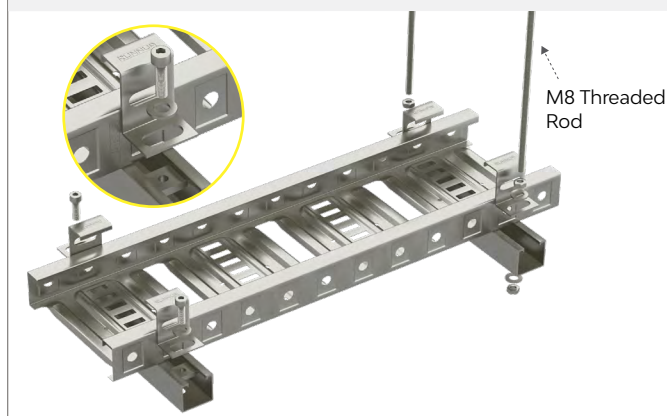


### Installation Method

Splice



Hold Down / MT Cable Tray Support



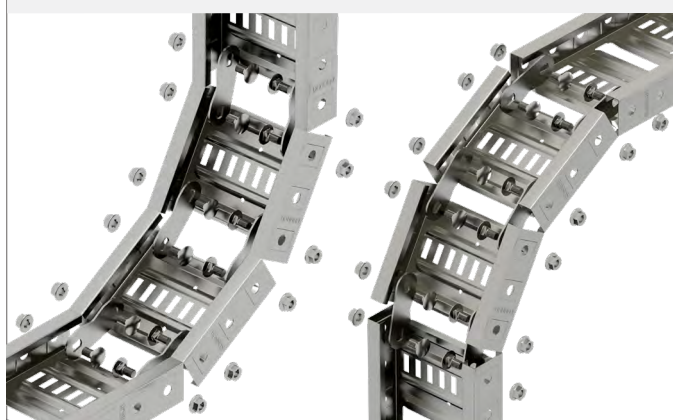
Bend



Tee / Cross



Internal Riser / External Riser

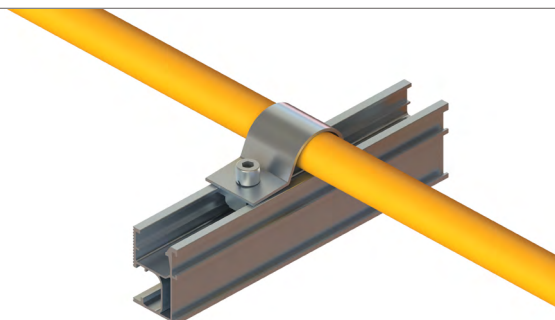


Tray Divider / Interface



## Installation Method

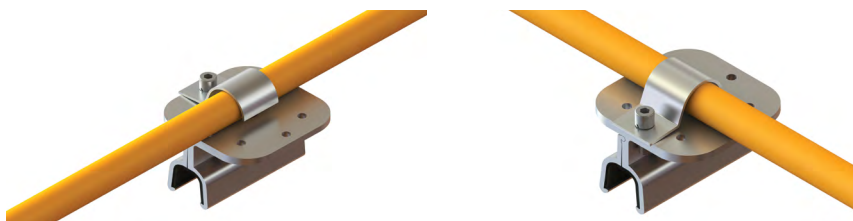
Conduit Half Saddle on Rail



Conduit Half Saddle on  
RUNNUR Interface



Conduit Half Saddle on  
Kliplok Bracket



Conduit Half Saddle on  
Brooklyn Kliplok Bracket

