

PV-ezRack SolarTerrace III-A

**Universal and earthed ground mount frame for corrosive environments
and for tough soil conditions**



PV-ezRack SolarTerrace III-A

Universal and earthed ground mount frame for corrosive environments and for tough soil conditions

Manufactured from high quality structural grade and anodised aluminium, PV-ezRack SolarTerrace III-A is the perfect mounting solution for corrosive environments. The support legs can be installed either with concrete ballast footing or on ground screws which makes it suitable for almost every soil condition. Its user friendly high level of prefabrication makes it easy to install and therefore practical for smaller commercial and even for residential installations.

Key Benefits

Durable even in harsh environments

STIII-A contains only 6005 Aluminium alloy and 304 stainless steel (316 on request), which makes it suitable for even the toughest environments, such as corrosive sites close to coastlines.

Support leg is delivered in one piece

The support legs of the STIII-A are completely pre-assembled, they only needed to be opened up and secured to the foundation. They even have the positioning rail clamps pre-installed**, so you don't need to measure and mark the rail positions anymore. The combination of these features is saving valuable time in assembly and logistics, making it one of the fastest system on the market.

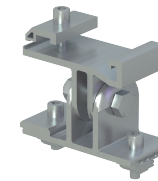
Suitable for all soil and ground types

The support legs can be installed either with a concrete ballast footing or with ground screws. This makes STIII-A suitable for the most challenging soil conditions where ramming is not possible.

Full earthing function

With pre-fitted pressure bolts and star washers in the pre-assembled support, it can create earthing continuity from T rail to support. In this way, SolarTerrace III-A system is a full earthing system.

BR-R110/EW/G
(optional)



East/West Adjustable Bracket for T-Rail 110 with grounding

The East/West Adjustable Bracket is specially designed for the projects installed in sloped areas and can significantly reduce the installation accuracy along east-west direction.

ER-RC-T/G



Rail Clamp for T-Rail with grounding/earthing pins

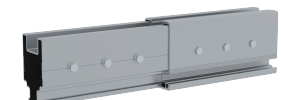
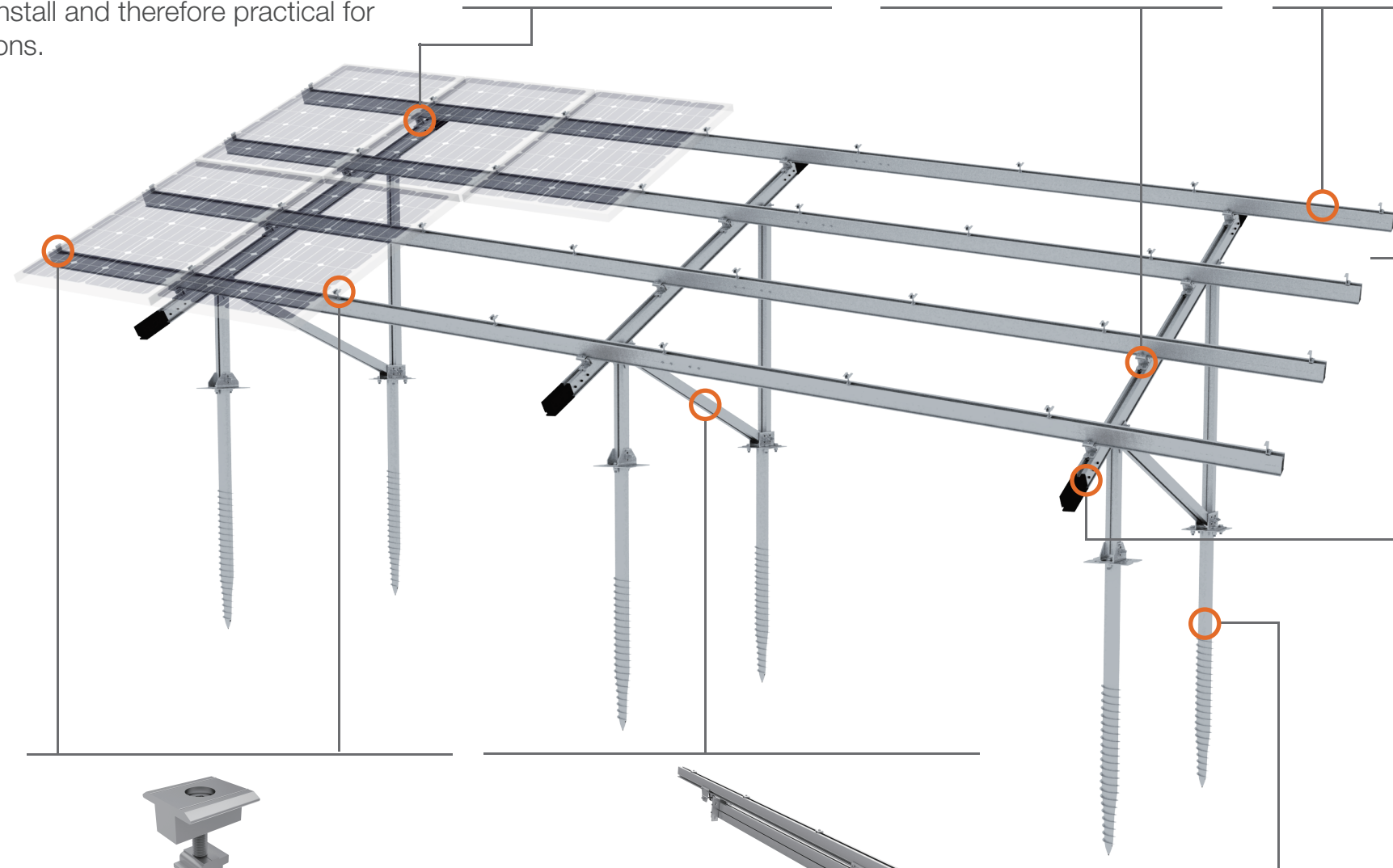
Rail-Clamps establish a secure connection between support legs and rails with our patented Z-Module technology. Available with grounding pins for earthing.

ER-R-T110



T-Rail 110

The rail profile has been specifically developed to achieve larger spans reducing the number of legs to be installed. These have a Z-Module channel for panel mounting and are secured with the Rail Clamps to the support legs.



GE-STA/200 (optional)

Girder Extension (200 mm)

Girder Extension is specially designed for supporting panels over 2000 mm long.

Available accessories

Grounding/earthing
Cable clips
Cable trays
Inverter/joint box bracket
Rail caps

Materials

AL6005-T5 | SUS304

ER-IC-ST ER-EC-ST
Inter and End clamps

The PV-ezRack inter and end clamps offer a simple, easy to use and robust fixing of the PV panels (all sizes) using the patented Clenergy Z-module. Compatible clamps for thin film modules are available.

Support ER-S-STIII-A

The STIII-A supports are completely pre-assembled, they only need to be unfolded and secured to the foundation. The anodised aluminium alloy profiles are connected with stainless steel fasteners. Furthermore through this new design the legs can be adjusted vertically by 50mm allowing for adjustments in case the foundation requires it. Available with different supports of 20 degree or 30 degree tilt angle for 60-cell or 72-cell panels.

GS-76/3.5/13-F0
GS-76/3.5/16-F0

Ground Screw,
Pipe Length 1300mm/1600mm

The Ground Screw is compatible with Clenergy SolarTerrace III-A, which is suitable for sand and clay soil.

10 Year
Warranty*

Commercial

Residential

12 Panels
per man-hour
(foundation excluded)

*see Clenergy PV-ezRack warranty for further details

Clenergy
Innovating renewable energy



Clenergy Australia

1/10 Duerdin Street, Clayton VIC 3168 Australia
 Tel: +61 3 9239 8088 Fax: +61 3 9239 8024
 E-mail: sales@clenergy.com.au
www.clenergy.com.au

Clenergy China

999-1009 Min'an Rd, Huoju Hi-tech Ind. Dev. Zone
 Xiang'an District 361101, Xiamen, Fujian, China
 Tel: +86 592 311 0088 Fax: +86 592 599 5028
 E-mail: sales@clenergy.com.cn
www.clenergy.com.cn

Clenergy EMEA

Esplanade 41, 20354 Hamburg, Germany
 Tel: +49 (0) 40 3562 389 00
 E-mail: sales.emea@clenergy.com

Clenergy Japan

Nittochi Yamashita Building 5th Floor
 23 Yamashita-cho, Yokohama, 231-0023 Japan
 Tel: +81 45 228 8226 Fax: +81 45 228 8316
 E-mail: sales@clenergy.co.jp
www.clenergy.jp

Clenergy Philippines

145 Yakal St., San Antonio village, Makati City, Philippines
 Tel: +63 977 8407240
 E-mail: sales_ph@clenergy.com
www.clenergy.ph

Clenergy Thailand

9/2, 5th Floor, Vorasin Building, Soi Yasob 2, Vipavadee-Rungsit
 Road, Chomphon Sub-district, Chatuchak District, Bangkok 10900
 Tel: +66 (0) 2 277 5201, +66 (0) 6 3228-0200
 E-mail: sales_th@clenergy.com, support_th@clenergy.com
www.clenergythailand.com

Clenergy Singapore

24 Raffles Place #28-01 Clifford Centre Singapore 048621
 Tel: +65 9743 1425
 E-mail: vincent.chan@clenergy.com

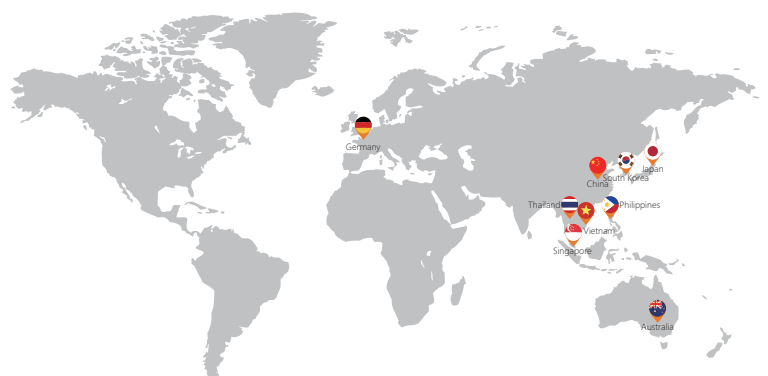
Clenergy Malaysia

Tel: +86 18750231005
 E-mail: sales_em@clenergy.com

Clenergy Vietnam

Tel: +86 592 3110095
 E-mail: sales_vietnam@clenergy.com;
susie.chen@clenergy.com

Worldwide Network



Clenergy PV-ezRack SolarTerrace III-A brochure 202008/AU