



# SolarTerrace III-A with Ground Screw

Universal and earthed ground mount frame for corrosive environments  
and for tough soil conditions



# SolarTerrace III-A with Ground Screw

## Universal and earthed ground mount frame for corrosive environments and for tough soil conditions

Manufactured from high quality structural grade and anodised aluminium, PVezRack® SolarTerrace III-A is the perfect mounting solution for corrosive environments. The support legs can be installed either with concrete ballast footing or on ground screws which makes it suitable for almost every soil condition. Its user friendly high level of prefabrication makes it easy to install and therefore practical for smaller commercial and even for residential installations.

## Key Benefits

### Durable even in harsh environments

STIII-A contains only 6005 Aluminium alloy and 304 stainless steel (316 on request), which makes it suitable for even the toughest environments, such as corrosive sites close to coastlines.

### Support leg is delivered in one piece

The support legs of the STIII-A are completely pre-assembled, they only needed to be opened up and secured to the foundation. They even have the positioning rail clamps pre-installed\*\*, so you don't need to measure and mark the rail positions anymore. The combination of these features is saving valuable time in assembly and logistics, making it one of the fastest system on the market.

### Suitable for all soil and ground types

The support legs can be installed either with a concrete ballast footing or with ground screws. This makes STIII-A suitable for the most challenging soil conditions where ramming is not possible.

### Full earthing function

With pre-fitted pressure bolts and star washers in the pre-assembled support, it can create earthing continuity from T rail to support. In this way, SolarTerrace III-A system is a full earthing system.

**10 Year  
Warranty**

**Commercial**

**Residential**



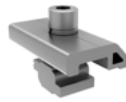
\*See [Clenergy PVezRack® Warranty](#) for further details.



**BR-R110/EW/G (optional)**

East/West Adjustable Bracket for T-Rail 110 with grounding

The East/West Adjustable Bracket is specially designed for the projects installed in sloped areas and can significantly reduce the installation accuracy along east-west direction.



**ER-RC-T/G**

Rail Clamp for T-Rail with grounding/earthing pins

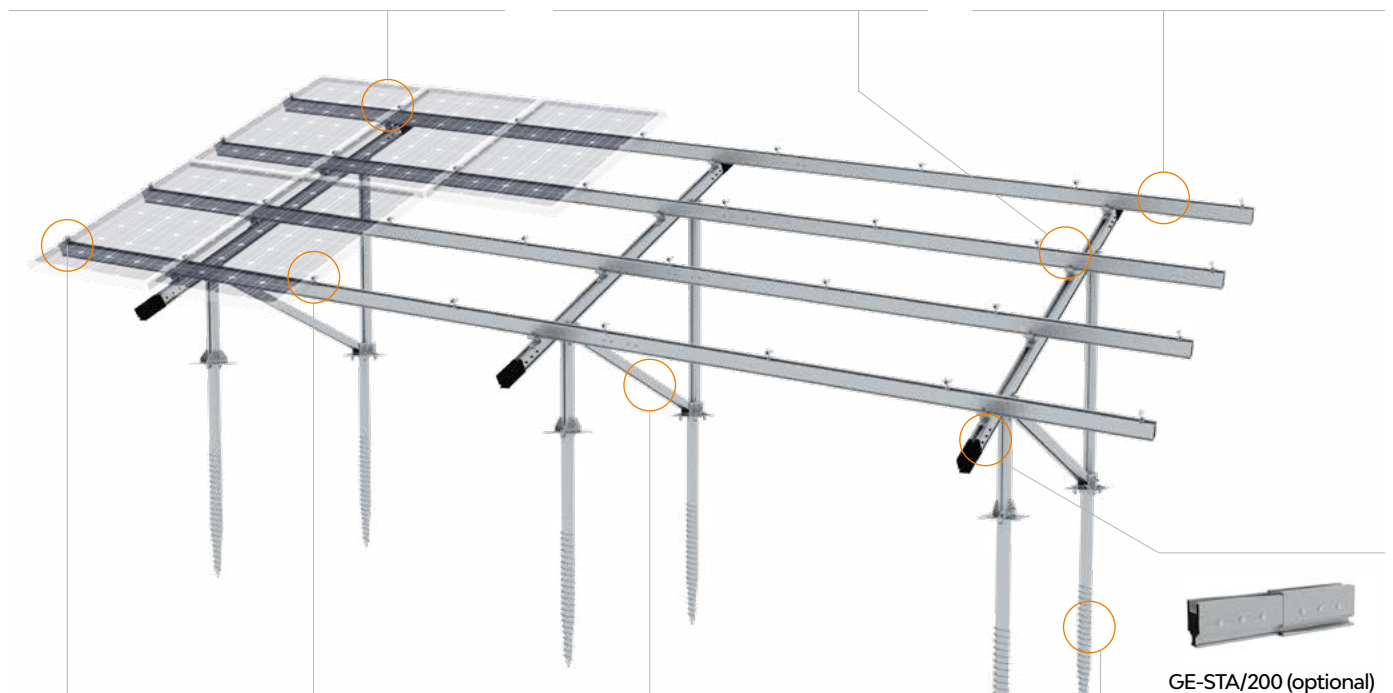
Rail-Clamps establish a secure connection between support legs and rails with our patented Z-Module technology. Available with grounding pins for earthing.



**ER-R-T110**

T-Rail 110

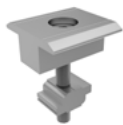
The rail profile has been specifically developed to achieve larger spans reducing the number of legs to be installed. These have a Z-Module channel for panel mounting and are secured with the Rail Clamps to the support legs.



**GE-STA/200 (optional)**

Girder Extension (200mm)

Girder Extension is specially designed for supporting panels over 2000 mm long.



**ER-IC-ST**

**ER-EC-ST**

Inter and End clamps

The PVezRack® inter and end clamps offer a simple, easy to use and robust fixing of the PV panels (all sizes) using the patented Clenergy Z-module. Compatible clamps for thin film modules are available.



**ER-S-STIIIA**

Support

The STIII-A supports are completely pre-assembled, they only need to be unfolded and secured to the foundation. The anodised aluminium alloy profiles are connected with stainless steel fasteners. Furthermore through this new design the legs can be adjusted vertically by 50mm allowing for adjustments in case the foundation requires it. Available with different supports of 20 degree or 30 degree tilt angle for 60-cell or 72-cell panels.



**GS-76/3.5/13-F0**  
**GS-76/3.5/16-F0**

Ground Screw,  
Pipe Length  
1300mm/1600mm

The Ground Screw is compatible with Clenergy SolarTerrace III-A, which is suitable for sand and clay soil.

**Available accessories**

- Grounding/earthing
- Cable clips
- Cable trays
- Inverter/joint box bracket
- Rail caps

**Materials AL6005-T5 | SUS304**

Contact us or one of our qualified resellers for a personalised quotation today.




## **PV-ezRACK®**

### Clenergy

1/10 Duerdin St  
Clayton VIC 2168  
Australia

Phone: +61 3 9239 8088  
Email: [sales@clenergy.com.au](mailto:sales@clenergy.com.au)  
Web: [www.clenergy.com.au](http://www.clenergy.com.au)

 @ClenergyGlobal / @ClenergyClub / ClenergyAUS  @Clenergy  @ClenergyClub  
 @Clenergy\_global  @Clenergy

A Clenergy Technologies Company

