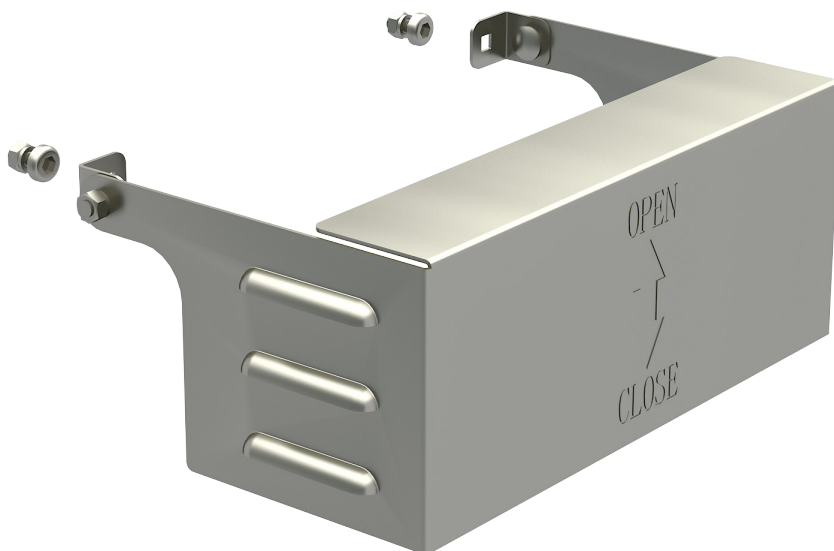


PV-ezRack Cover for Isolator Bracket

Code-Compliant Planning and Installation Guide V1.0

Complying with AS/NZS 5033: 2014 AMDT 2: 2018



Introduction

1. Introduction

PV-ezRack Cover for Isolator Bracket is specially designed for Isolator Bracket (part number: EZ-IB-SR240/100), suitable for PV array AC/DC isolators.

When correctly installed, the Isolator cover assembly with isolator bracket is designed to function as a shroud to protect isolator and its enclosure from direct exposure to sunlight and rain as required by clause 4.3.3.3.2 of AS/NZS 5033:2014 Amdt 2: 2018. The isolator must have a suitable enclosure conforming to clause 4.3.3.3.1 of AS/NZS 5033:2014 Amdt 2: 2018. The isolator and its enclosure fit inside the shroud after assembly of isolator bracket and the cover.

Please review this guide thoroughly before installing PV-ezRack Cover for Isolator Bracket.

List of Contents

Introduction	01
Tools & Components	02
Installation Instruction	03

The installer is solely responsible for:

- Complying with all applicable local or national building codes, including any that may supersede this manual;
- Ensuring that PV-ezRack and other products are appropriate for the particular installation and the installation environment;
- Using only PV-ezRack parts and installer-supplied parts as specified by the PV-ezRack project plan. (substitution of parts may void the warranty and invalidate the letter of certification);
- Recycle according to the local relevant statutes;
- Removal by reversing the installation process;
- Ensure that there are no less than two professionals working on panel installation;
- Ensure the installation of related electrical equipment is performed by licenced electricians;
- Ensuring safe installation of all electrical aspects of the PV array. This includes adequate earth bonding of the PV array and PV-ezRack[®] components as required in AS/NZS 5033-2014 AMDT 2 2-2018.

Tools & Components

2. Tools & Components

2.1 Tools

Tools



Power Tool
(maximum torque ≥ 20 N·m , for
M8 Hexagon Socket Screw and
M8 Nut



Marker Pen



Torque Wrench



10mm Spanner

2.2 Components



CO-IB/240/100
Cover for Isolator Bracket,
240*100mm

3. Installation Instructions

3.1 Drill two round holes with diameter of 8mm on Isolator Bracket (part number: EZ-IB-SR240/100) as shown in Figure 1.

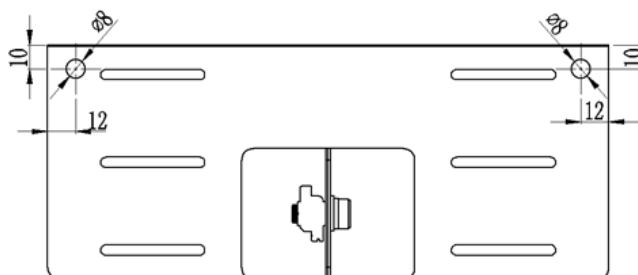


Figure 1

3.2 Assemble the Cover and the Isolator Bracket together as shown in Figure 2 and 3. Do not fasten the bolt as shown in Figure 2.

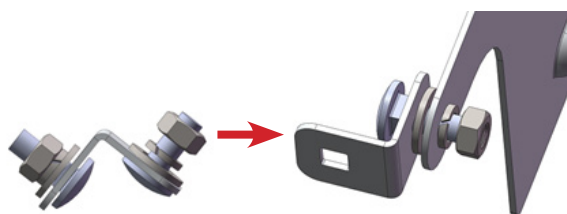


Figure 2

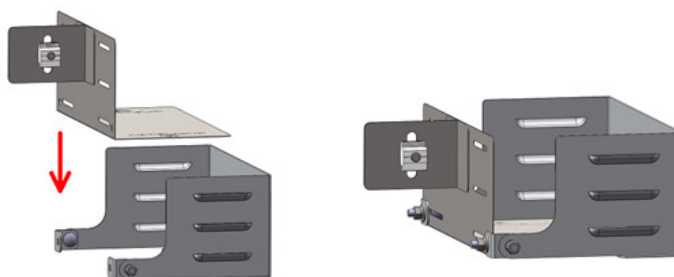


Figure 3

3.3 During installation, there could be interference between the bolt head of the Cover and Bracket. Please pull out the Cover slightly in order to make the bolt head pass through as shown in Figure 4.

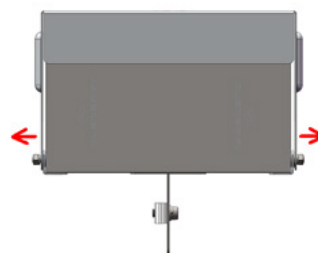


Figure 4

Installation Instruction

3.4 Align the square hole of the Cover with the round hole of the Bracket as shown in Figure 5.



Figure 5

3.5 Fasten the Cover and the Bracket with M6 bolts as shown in Figure 6.



Figure 6

Recommended torque for M6 bolts is 5-6N·m

3.6 Open the Cover and install the Isolator on the Bracket according to the installation instruction for Isolator as shown in Figure 7.

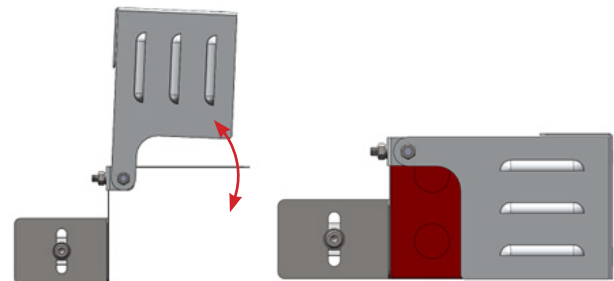


Figure 7

3.7 Install the Isolator Bracket at the end of rail as shown in Figure 8.

Recommended torque for M8 is 16-20N·m

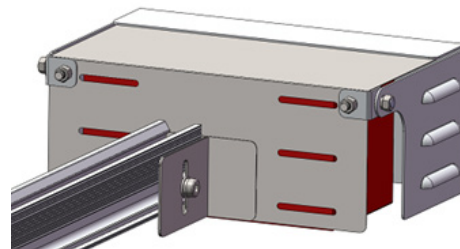


Figure 8

Installation Instruction

3.8 Fasten two M6 bolts in Figure 9 with recommended torque of 5-6N·m to allow for optimal opening and closing of the isolator cover.

Note: The deformation of the Isolator Bracket should be avoid When fasten the nut.

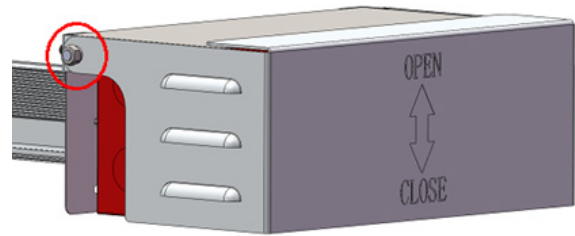
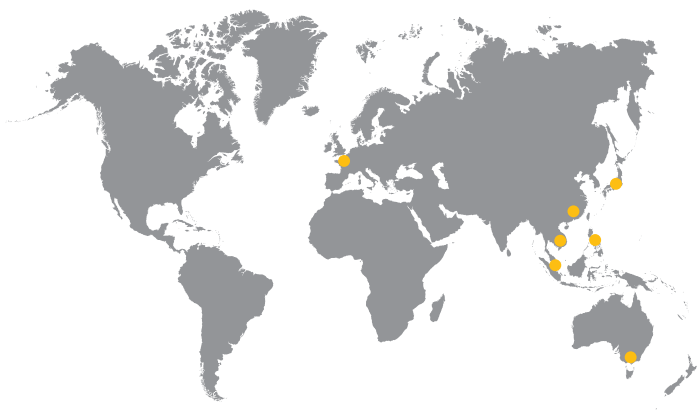


Figure 9



Worldwide Network



Clenergy Australia

1/10 Duerdin Street, Clayton VIC 3168 Australia
Tel: +61 3 9239 8088 Fax: +61 3 9239 8024
E-mail: sales@clenergy.com.au www.clenergy.com.au

Clenergy China

999-1009 Min'an Rd, Huoju Hi-tech Ind. Dev. Zone
Xiang'an District 361101, Xiamen, Fujian, China
Tel: +86 592 311 0088 Fax: +86 592 599 5028
E-mail: sales@clenergy.com.cn www.clenergy.com.cn

Clenergy EMEA

Esplanade 41, 20354 Hamburg, Germany
Tel: +49 (0) 40 3562 389 00
E-mail: sales.emea@clenergy.com

Clenergy Japan

Nittochi Yamashita Building 5th Floor
23 Yamashita-cho, Yokohama, 231-0023 Japan
Tel: +81 45 228 8226 Fax: +81 45 228 8316
E-mail: sales@clenergy.co.jp www.clenergy.jp

Clenergy Philippines

145 Yakal St., San Antonio village, Makati City, Philippines
Tel: +63 977 8407240
E-mail: sales_ph@clenergy.com www.clenergy.ph

Clenergy Thailand

9/2, 5th Floor, Vorasin Building, Soi Yasoob 2, Viphavadee-Rungsit Road, Chomphon Sub-district, Chatuchak District, Bangkok 10900
Tel: +66 63 228 0200, +66 81 969 5152
E-mail: sales_th@clenergy.com, support_th@clenergy.com

Clenergy Singapore

24 Raffles Place #28-01 Clifford Centre Singapore 048621
Tel: +65 9743 1425
E-mail: vincent.chan@clenergy.com

Clenergy Vietnam

Tel: +86 592 3110095
E-mail: sales_vietnam@clenergy.com;
susie.chen@clenergy.com;
ducnguyen@clenergy.com

