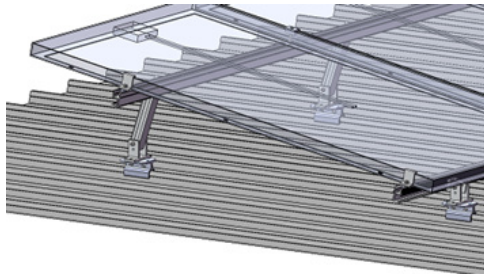
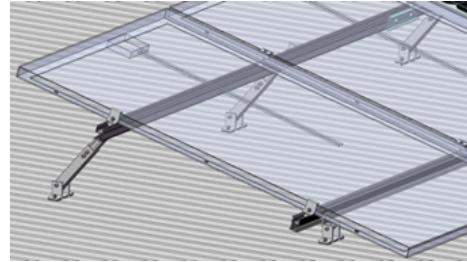


PV-ezRack SolarRoof Adjustable Tilt Legs, non-preassembly

- Assembly -



Install with Klip-lok Interface



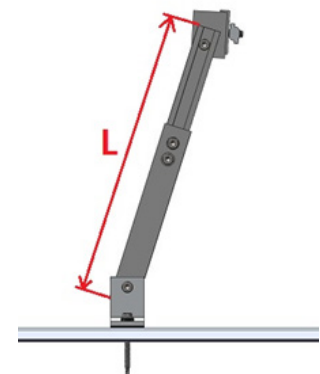
Install on tin roof directly

- Components -



- Technical Specification -

Screw Specification	4 x Buildex 14-11 x 70 (14 gauge, 6.3 mm, 11 TPI, 70 mm long) Hex Head Zips screw
Adjustable Range	ER-TL-10/15: 10-15° (L: 260-375 mm) ER-TL-15/30: 15-30° (L: 390-635 mm) ER-TL-30/60: 30-60° (L: 675-1205 mm)
Weight	ER-TL-10/15: 1.056kg ER-TL-15/30: 1.277 kg ER-TL-30/60: 1.764 kg
Packaging	ER-TL-10/15: 5 units per pack, 4 packs (20 units) per carton ER-TL-15/30: 20 units per carton ER-TL-30/60: 10 units per carton
Material	Tilt Legs: AL6005-T5; Fasteners: SUS304
Color	Silver (half-anodized no less than 10 µm)



Adjustable Length for Rear Leg