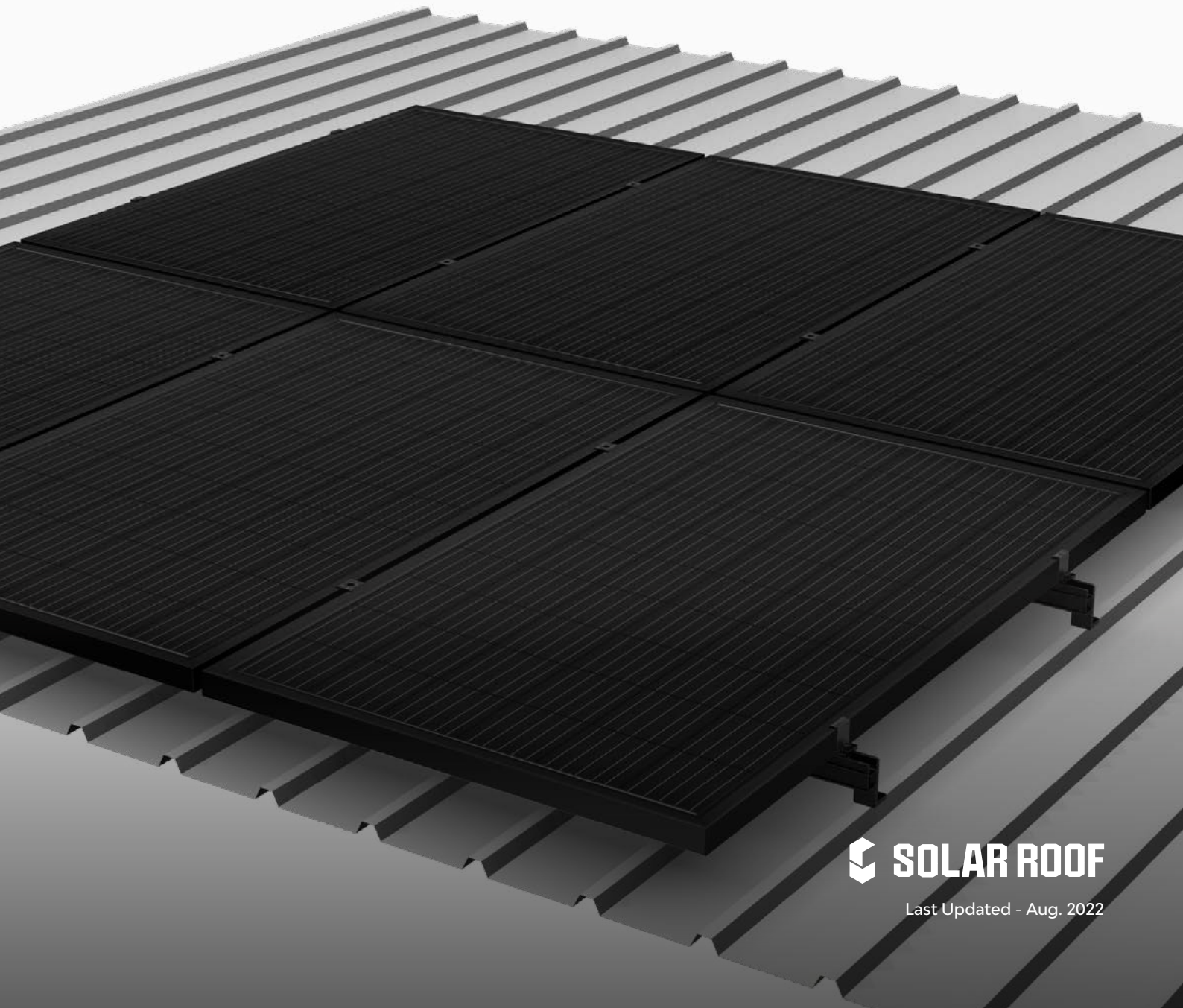




# Black Anodized

Reliable, robust roof mounting system with high quality components designed



# SolarRoof-Black Anodized

PVezRack® SolarRoof is an universal mounting system for PV installation on roof, which is available for black and silver. The components are easy to install and can be used for flush as well as tilted systems, on a large variety of roof types. The interfaces, rails and clamps use high quality, robust and corrosion resistant materials including structural grade aluminium alloy (AL6005-T5) and stainless steel (SUS304).

## Main Benefits

### Quick and easy installation

Innovative and internationally patented, the Z-Module technology is used in almost all SolarRoof components. The Z-Module provides a quick, easy and safe installation method. It can be inserted in to the rail at any given point, and secured with just three hand grips.

### Versatility

A large variety of tin roof fixings, tilt legs and adapters help ensure that you will find a suitable fixing method for almost every roof, where fixing with or without penetration is required.

### Wide range of tilting

With three adjustable tilt legs, these parts can tilt panels from between 10-60 degrees. Through its innovative design, the tilt legs can cope with all common purlin distances.

### Universal

SolarRoof has suitable mid and end clamps for every size of solar panel including frameless, thin film panels or special clamps for cyclonic regions. In the growing range of clamps, cable clips, adapters and accessories you're sure to find the parts you require for your residential rooftop mounting needs.

**10 Year  
Warranty**

**Commercial**

**Residential**

**International Patent**  
PCT/AU2009/000616

\*See [Clenergy PVezRack® Warranty](#) for further details.



C-U/30/46/BA



C-U/30/46-G/BA



ER-EC-ST50B



ER-IC-STXXB



ER-TL-10/15/BA ER-TL-15/30/BA

**Universal Clamp**

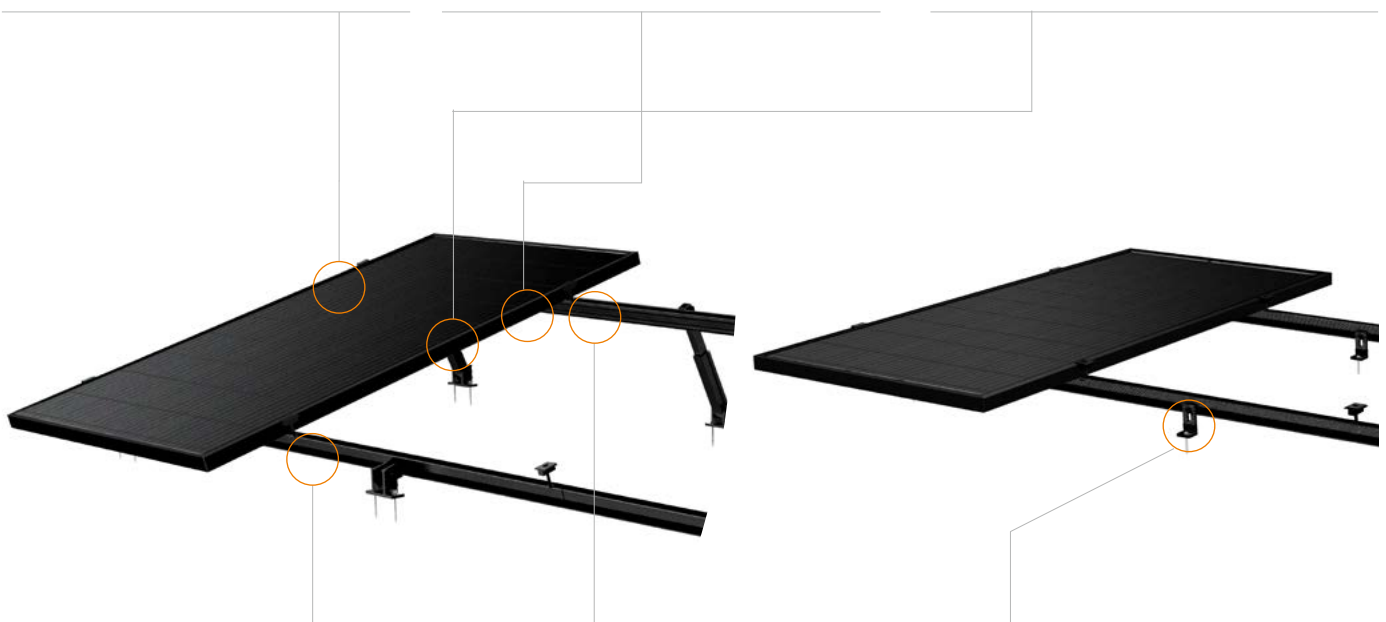
PVezRack® Universal Clamp, with dual functionality (inter and end clamp), is applicable with most common framed PV modules from 30 mm to 46mm in height. Inbuilt grounding clip is also available.

**Inter and End Clamps**

The PVezRack® Inter and End clamps offer a simple, easy to use and robust fixing of the PV panels (of all sizes) using the patented Clenergy Z-module. Compatible clamps for thin film modules are also available.

**Tilt Legs**

The available adapters, non-penetration clamps and base rails make the application of this part truly universal.



ER-R-ECO/BA



ER-SP-ECO/BA



ER-I-05/BA ER-I-25/BA EZ-AD-C43/BA

**ECO Rail**

Specifically developed to achieve larger spans, the SolarRoof ECO-Rail has reduced the number of required fixings. The ECO-Rails have two patented Z-Module channels with one at top for panel mounting and the second on side for connecting to the roof interface. The ECO-Rail comes in 4200mm and 4400mm lengths.

**Splice for ECO Rail**

Specifically developed to achieve larger spans, the ECO-Rail has reduced the number of required fixings. The ECO-Rails have two patented Z-Module channels with one at top for panel mounting and the second on side for connecting to the roof interface.

**Tin Interface**

The robust aluminium L-feet, which provides a height adjustment of almost 30mm, is designed for corrugated and trimdek type tin roofs. It comes with a Z-Module or Click Module plus bolt preassembled, with a screw which includes bonded sealing washer plus an EPDM rubber pad.

**Available accessories**



Isolator Shade



Rail caps

**Materials** AL6005-T5 | SUS304






Contact us or one of our qualified resellers for a personalised quotation today.



## Clenergy

1/10 Duerdin St  
Clayton VIC 2168  
Australia

Phone: +61 3 9239 8088  
Email: [sales@clenergy.com.au](mailto:sales@clenergy.com.au)  
Web: [www.clenergy.com.au](http://www.clenergy.com.au)

 @ClenergyGlobal / @ClenergyClub / ClenergyAUS  @Clenergy  @ClenergyClub  
 @Clenergy\_global  @Clenergy

A Clenergy Technologies Company

