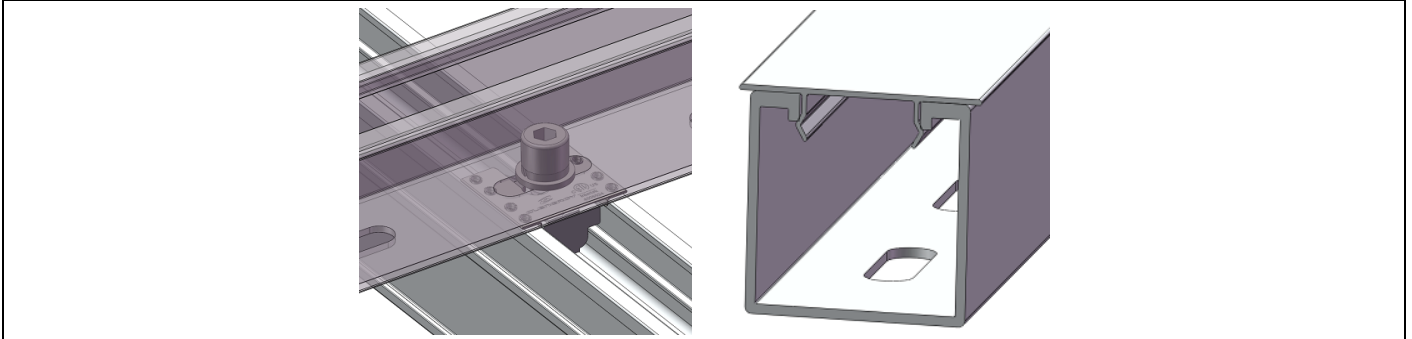
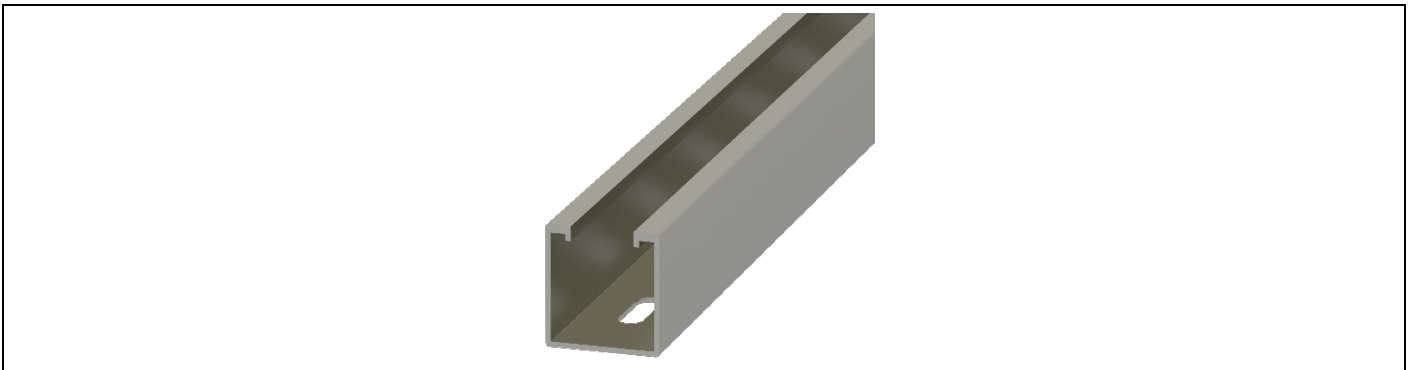


## MT-Rail Cable Tray

### Assembly

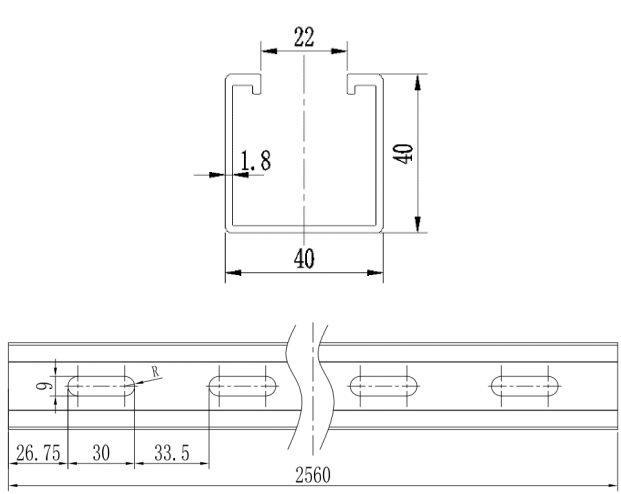


### Component



MT-Rail Cable Tray, 40\*40\*2560 mm  
Part No.: **EZ-CT-40/40/2560**

### Technical Specification

Application	Fix Solar DC Cables	
Fixing Method	Fix on the ECO or T rail with Z module	
Cable Load Per Meter	Span 1.0m: 239 kg Span 1.5m: 106 kg Span 2.0m: 59 kg Span 2.5m: 38 kg	
Dimensions	L2560mm*W40mm*H40mm	
Weight	1.73 kg	
Packaging	1020 pcs per pallet	
Material	AL6005-T5	
Finish	Mill Finish	
Standard	AS NZS1170.2-2011	