



ComT

Tilt mounting system for PV installation on tin roof's



ComT

The Clenergy PVezRack® ComT is an universal and fast mounting system for PV installation on all residential or commercial flat tin roofs. With its flexible and scalable design it enables perfect utilization of roof surface available. With tilt angles of 5°, 10° or 15°, the PV panels can generate a maximum output. Both silver and black anodized components are available.

Main Benefits

Easy and quick installation

Highly pre-assembled legs enable easy and fast installation. With our patented Z-Module, the legs can easily click into the slot of Rails at any given points.

Optimize energy output

The Legs can mount PV panels that width up to 1200 mm. And with 5° (available soon), 10° and 15° (available soon) tilt angles options, PVezRack® ComT can offer optimized energy output.

Two Optional Solutions

The solution using MT Rail in conjunction with T-Rails and Legs is specially developed for tin roofs with a large purlin span over 3 m. And the other one using our popular L-feet, ECO Rails and new Legs offers flexible height adjustable range.

Universal

The adjustable clamps can mount framed PV panels that height from 30 to 46 mm. And with Clenergy various frameless clamps, PVezRack® ComT can mount every size of frameless or thin film panels.

**10 Year
Warranty**

Commercial

Residential



EZ-CT-40/40/2560
Cable Tray

The Cable Tray is special developed for holding cables, which keep module interconnect cables neatly connected to the mounting rails so they do not drop below the array. Work with the Cover for MT-Rail as a new solution for cable management.



CO-MT/855
Cover for
MT-Rail



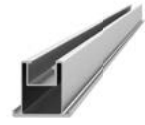
FL-COMT/Z/G & RL-COMT/Z/G
Legs Assembly

Highly pre-assembled Legs enable easy and fast installation. Manufactured from aluminum offer excellent corrosion resistance.



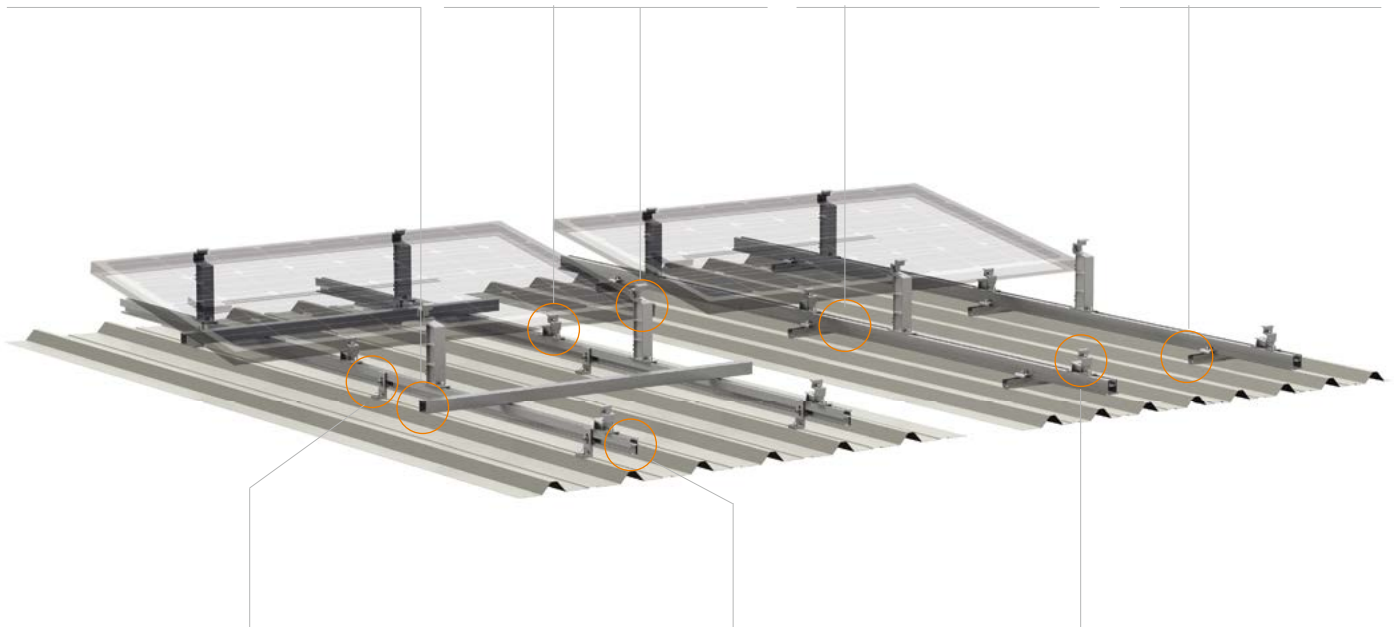
S-MT
MT-Rail Support

The MT-Rail Support (240 mm/440 mm) is special developed for tin roofs with large span purlins. Glued EPDM pad applied for water-resistance protection.



ER-R-T
T-Rail

The Rail profile has been specially developed to achieve large spans to reduce the number of interfaces to be fixed. Both T-Rail 50 and T-Rail 110 available.



ER-I-05
Tin interface



ER-I-05/CM



ER-I-05A/EZ/ECO



ER-I-25



EZ-AD-C43

The robust aluminium L-feet, which provides a height adjustment of almost 30mm, is designed for corrugated and trimdek type tin roofs. It comes with Z-Module, Click Module or ez Connection, which is pre-assembled and helps to ease the Rail installation.



ER-R-ECO
ECO Rail

Specifically developed to achieve larger spans, the ECO-Rail has reduced the number of required fixings. The ECO-Rails have two patented Z-Module channels with one at top for panel mounting and the second on side for connecting to the roof interface.



ER-RC-T/DM
Rail Clamp for T-Rail,
with Diamond Module

The Rail Clamp is used to fix Rail. Pre-assembled design could make the installation easier.

Available accessories



Grounding / earthing



Cable clips

Materials AL6005-T5 | SUS304

Contact us or one of our qualified resellers for a personalised quotation today.




PV-ezRACK®

Clenergy

1/10 Duerdin St
Clayton VIC 2168
Australia

Phone: +61 3 9239 8088
Email: sales@clenergy.com.au
Web: www.clenergy.com.au

 @ClenergyGlobal / @ClenergyClub / ClenergyAUS  @Clenergy  @ClenergyClub
 @Clenergy_global  @Clenergy

A Clenergy Technologies Company

